

High Performance Image Processing. Faster & Easier.

Now, getting the information you need from your geospatial imagery using advanced processing and analysis techniques is easier than ever. ENVI 4.4 provides more spectral processing and analysis capabilities — the core tools that make ENVI the choice of geospatial professionals worldwide. In addition, the latest release of ENVI delivers new functionality that streamlines your image processing and analysis workflow, allowing you to quickly and efficiently work with vector layers, pan sharpen images, conduct change detection, and more.

Advanced Spectral Image Processing

Research and image scientists around the world count on ENVI for advanced spectral processing tools. ENVI 4.4 introduces new capabilities to help you discover features in your imagery hidden by vegetation. The new **Vegetation Suppression** feature allows you to remove the vegetation spectral signature from your imagery to:

- Interpret geologic and urban features,
- Perform linear feature enhancement,
- Identify items hidden under open and closed vegetation canopies, and
- Detect vehicles or encampments underneath vegetation.

A More Streamlined Image Processing Workflow

Capabilities in ENVI 4.4 keep the image analysis workflow in mind, introducing new tools that allow you to perform both basic and advanced image processing routines easily and quickly, regardless of your experience level.

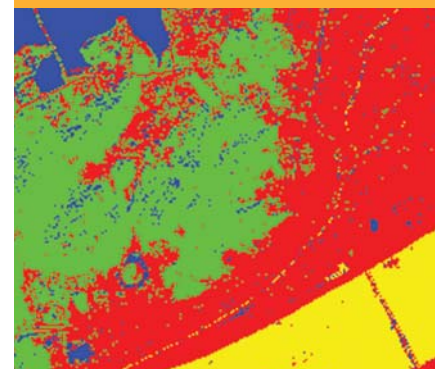
New ENVI Tools for the Image Analyst

ENVI 4.4 introduces the **SPEAR Tools** - a robust suite of tools designed to help you quickly perform common image processing tasks. These wizard-based tools greatly reduce the number of steps to produce specific geospatial information products, and allow you to easily:

- Pan-sharpen images
- Detect lines of communication
- Find watercraft
- Measure relative water depth
- Conduct TERCAT (Terrain Categorization)
- Perform change detection
- Assess vegetation delineation and stress detection
- Produce spectral analogues to find similar materials



The new **Vegetation Suppression** feature in ENVI 4.4 removes the spectral signatures of vegetation in multispectral imagery, making other elements in the image available for further analysis and interpretation.



The new ENVI **SPEAR Tools** automate common image processing tasks. The two images above illustrate the TERCAT (Terrain Categorization) tool, which allows you to classify the pixels in a image to determine distinctive types of land cover.

Vector Layers in ENVI Zoom

For many geospatial analysis professionals, vector layers are essential to understanding the elements of an underlying image. Now, ENVI 4.4 makes performing common vector layer tasks faster and more convenient by allowing you to access functionality through the intuitive ENVI Zoom interface. These new capabilities allow you to:

- Import vector layers from virtually any source,
- Edit vector layers based on project requirements, and
- Export vector layers to an ESRI Shapefile.

Additional Visualization Tools in ENVI Zoom

ENVI's optional interface, ENVI Zoom, now includes new tools that increase the efficiency of your workflow, including:

- **"Up is Up"** button - Rotates an image so that buildings are aligned vertically with your display,
- **"Go To"** tool - Takes you automatically to an area defined by designated coordinates,
- **Path history** - Turn your view box path history on or off, and clear it on demand, and
- **Crosshair tool** - See exact locations of a particular pixel or area of interest.

ENVI Certified NITF Module Support

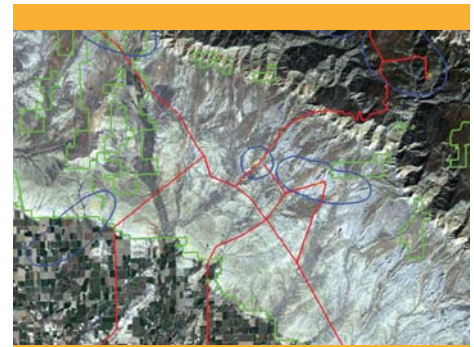
ENVI provides robust add-on modules that support the National Imagery Transmission Format (NITF), NATO Secondary Image Format (NSIF) and Tape Format Requirements Document (TFRD) – the preferred standards for government and NATO data. The ENVI Certified NITF Module and ENVI Certified NITF Module with TFRD introduce new capabilities released concurrently with ENVI 4.4. The ENVI Certified NITF Module delivers enhancements to NITF image visualization, easier access to NITF metadata, new TRE support, and allows you to read in NITF annotations. And, if you use TFRD data, you can now upgrade to the ENVI Certified NITF Module with TFRD, which allows you to open, view, and process TFRD imagery and metadata — all from within ENVI.

Support for the ENVI Feature Extraction Module

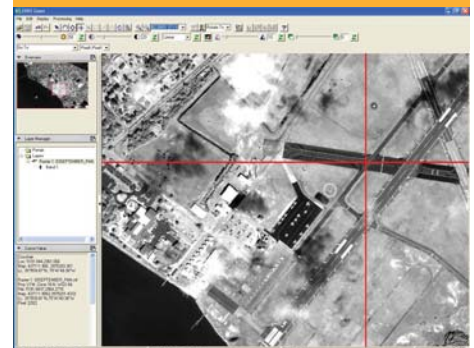
ENVI 4.4 introduces support for the new ENVI Feature Extraction Module. This add-on functionality to ENVI allows you to quickly, easily, and accurately find and identify features of interest in high resolution geospatial imagery. Providing significant time savings over traditional feature extraction methods, this object-based technology replaces manual digitization processes. Now, you can conveniently find particular features across large images, extract vector layers for further analysis, and classify images as outputs to be used in reports or analyses.

Access. Analyze. Share.

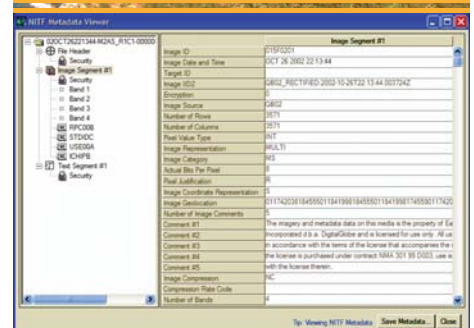
Improve your image processing and analysis capabilities and workflow today. Download ENVI 4.4 from www.ittvis.com/envi, or locate your account representative on the web at www.ittvis.com/FindMyRep or call 303-786-9900.



With ENVI 4.4 you can now import, edit, and export vector layers. Import roads, agricultural boundaries, vehicle point locations, and more, then use powerful visualization tools to analyze your data.



Easily see the exact locations of a particular pixel or area of interest in your image with the new crosshair tool in ENVI 4.4.



ENVI makes it easy to open, view, and process a NITF image (top). The NITF image's metadata (bottom) is also easy to display and edit.