

IDL 7.1



Modern Platform for Data Visualization and Analysis

IDL is the preferred computing environment for understanding complex data through interactive visualization and analysis. IDL 7.0 introduced a new, simplified way to perform ad hoc visualization and application development with a modern, GUI-based approach called the IDL Workbench, based on the Eclipse platform. Now, IDL 7.1 is even easier to use. It expands on the modernization introduced in IDL 7.0 and features significant advancements to simplify data interaction whether you're an experienced, new, or occasional user.

IDL Workbench Enhancements

The IDL Workbench you'll find in IDL 7.1 includes many new features that make IDL more intuitive to use. A convenient new Tool Palette gives you one-click access to a variety of visualization and analysis functions, and works with variables to create instant visualizations by dragging and dropping data. And, the new Visualize View added to the IDL Workbench shows you thumbnail previews of your work, making it easy to see and locate a specific visualization while working on multiple items at once.

NEW Tool Palette

The new IDL Tool Palette is a significant addition to the IDL Workbench, improving usability by making data visualization and analysis a simple click away. The Tool Palette allows for instant visualization of variables or data files by allowing you to simply drag and drop a data set onto any one of seven pre-made tools located on the Tool Palette. In addition, you can easily create new tools for the Tool Palette, or extend and customize the existing tools by re-configuring "actions" – the set of parameters that defines how a tool can process your data.

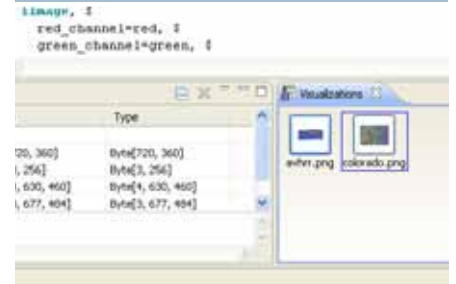
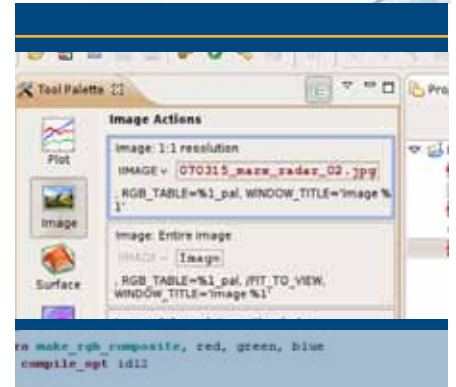
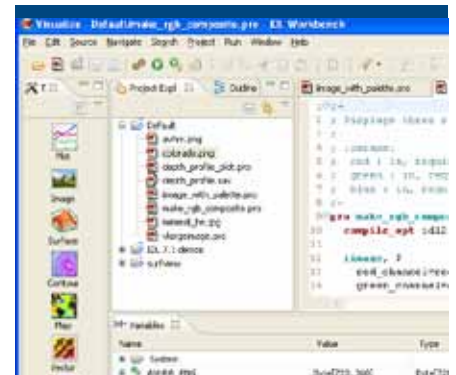
Plug-in to the IDL Community

The greater community of IDL and Eclipse users can now conveniently share development components, commonly known as plug-ins, to easily extend the functionality of IDL. Find code to add to your IDL application, or share what you've developed with colleagues around the world.

Now, IDL 7.1 has a new Plug-in Wizard that makes it virtually effortless to share development components or extend your IDL application with components developed by other people. The Plug-in Wizard guides you through a step-by-step process for creating, accessing, and sharing plug-ins.

Expanded File Open Capability

Without writing any code, IDL now allows you to open many file types, making it easier to access and visualize data, including, BMP, GIF, TIFF, JPG, ISV, and more. Simply use the File>Open menu or click on a file to open it from within IDL or Windows Explorer – it's that easy.



Project Builder Improvements

IDL Project Builder is a helpful feature that makes it easy to bundle items related to a project, for use either in a runtime environment or for distribution as a plug-in. IDL 7.1 is enhanced with new build properties that give you greater control over building and exporting your IDL projects. The new build properties let you:

- Restore SAV files from referenced projects to automatically incorporate code from other SAV files and include them in your project for easier application distribution
- Execute an IDL command prior to or after building a project
- Set the build order for cleaner compiling
- Create your own build script from within the properties dialog

IDL Command Line for Windows

Since the introduction of IDL 7.0, IDL has provided you with the option to program directly from the command line or from the IDL Workbench if you are in a UNIX-based environment. Now, IDL 7.1 introduces the ability to work from an IDL command prompt in Windows – giving you the freedom to work from the IDL Workbench or a command line, regardless of your operating system.

Improved iTools

If you want to perform advanced data visualizations, but you don't want to write code for each routine, IDL provides IDL iTools - a set of interactive, pre-built applets that graph, plot, display, map data, and more. IDL 7.1 enhances iTools by including a new procedural interface that expands your control of these tools, allowing you to extend and customize them easily. And, we've improved the quality of output you get when using iTools by introducing enhanced graphics, text, fonts and better positioned labels – making your final output more visually appealing.

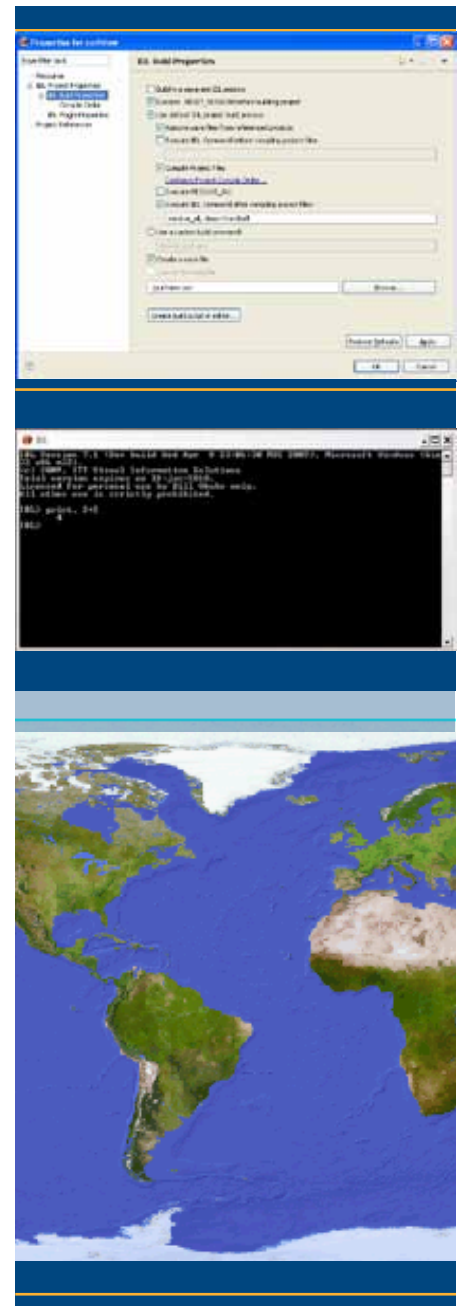
More IDL Enhancements

In addition to the IDL Workbench enhancements like the Tool Palette and the new Visualize View, IDL 7.1 also introduces many new features that enhance core IDL capabilities as well as support for advanced tasks:

- **Read CSV Files Directly into IDL** – IDL 7.1 now allows users to read, write, and query CSV files
- **True Color Post Scripts** – Direct graphics PostScript color has been enhanced to include 24-bit color
- **Cross Platform Support** – IDL 7.1 now supports Windows Vista, Mac OS X Intel 64-Bit, and the DICOM Toolkit on Windows 64-Bit
- **Support for Scientific Data Formats** – IDL 7.1 now supports CDF-3.2, HDF4-r2.3, and HDF5-1.6.7
- **New Image Processing Filters** – IDL 7.1 has filters to reduce noise and perform image restoration
- **IDL Python Bridge** – IDL 7.1 enables you to incorporate Python code into your IDL application with a third party application called Slither
- **Advanced Math and Stats Module** – This add-on module integrates the comprehensive mathematical and statistical routines of the IMSL™ C Numerical Library with the visualization and analysis capabilities of IDL

To purchase or learn more about the new IDL 7.1, go to www.ittvis.com/IDL.

To find a representative, call 303.786.9900 or visit www.ittvis.com/FindMyRep.



IDL 7.1. Quick and Easy Data Visualization and Analysis.